



2014

UR Understanding Risk forum

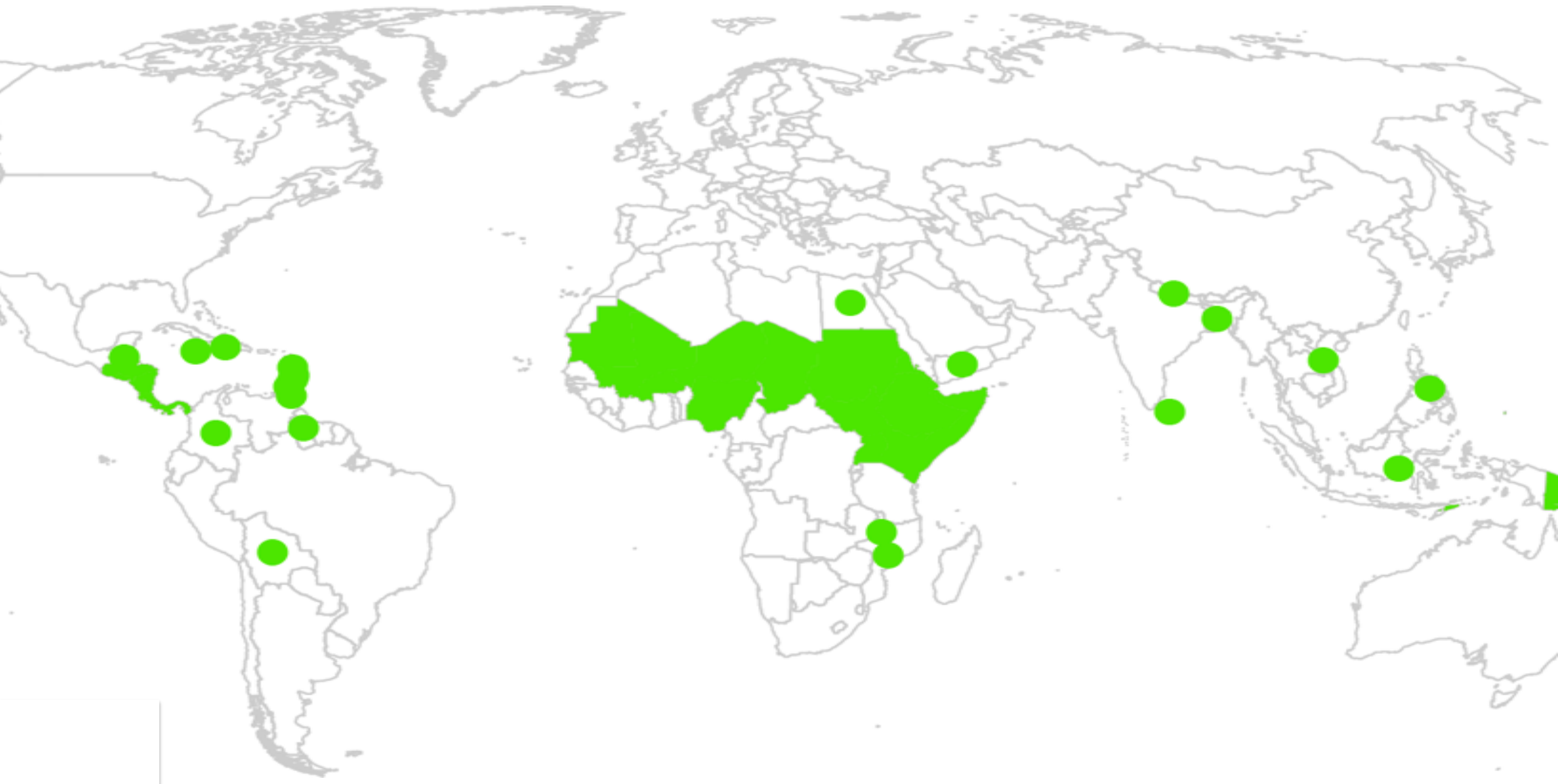
Producing actionable information

June 30 - July 4, 2014, London, UK

“The Power of the Crowd”
Harnessing Communities
& Opening Data

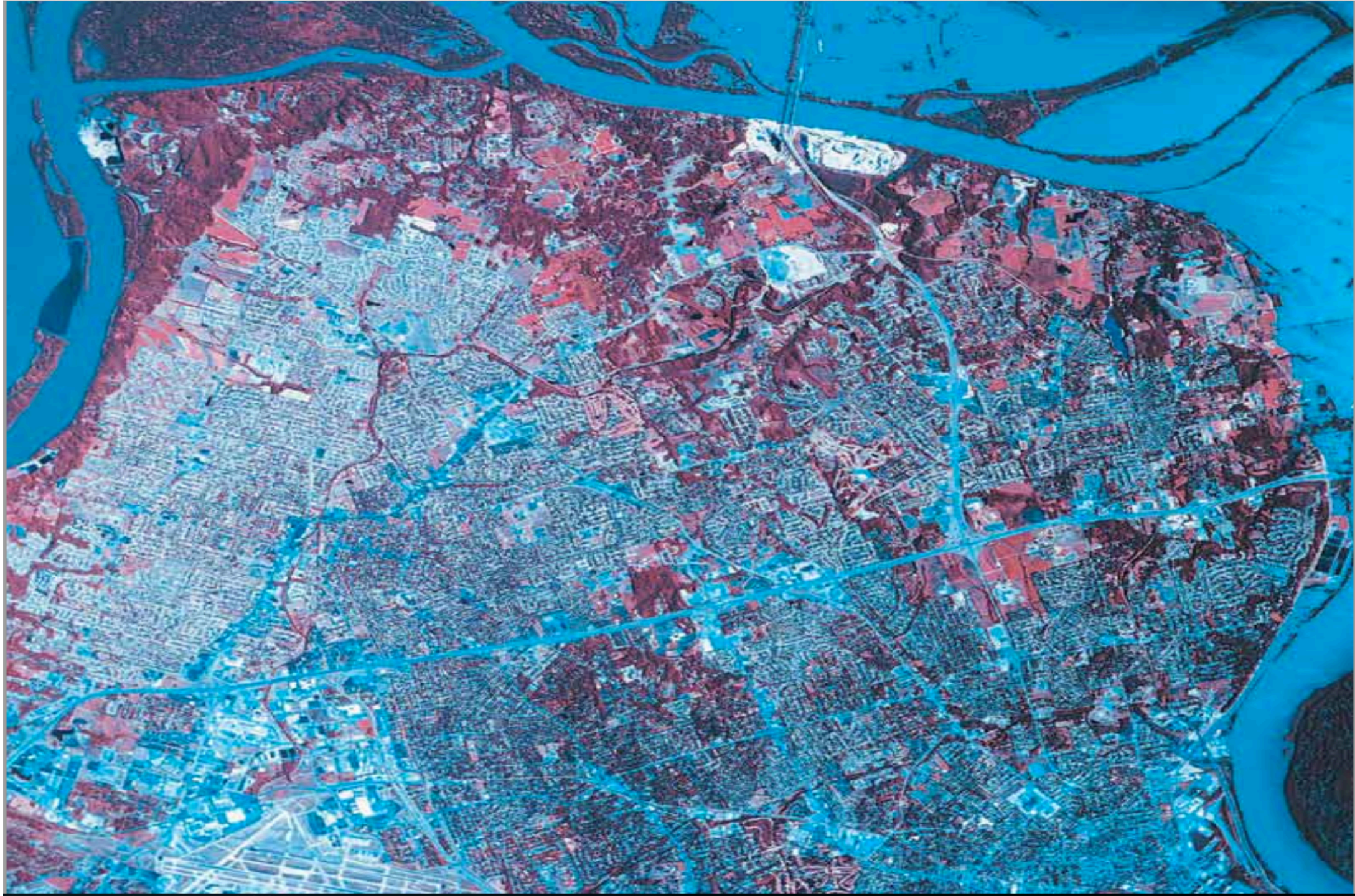
Robert Soden
World Bank/GFDRR
Tuesday – 11-12:30, Room C





UR











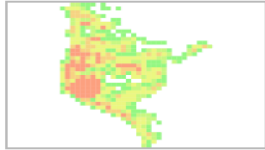


07/21/2013 18:43

Our Session

LATEST LAYERS

Total: 45



Density of Buildings

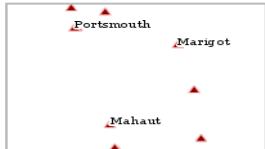
Layer from [admin](#), 5 months ago

Building density (sq.m area of buildings per 100m x 100m block). Created from 2010 buildings layer (Roseau Buildings).

311 views



Average rating (0 votes)

[Download](#)[Create a map](#)

Health Facilities

Layer from [admin](#), 5 months ago

Health facilities including Hospitals, Clinics and Centers. Created as part of the 1995 CIDA funded GIS database project.

318 views



Average rating (0 votes)

[Download](#)[Create a map](#)

Tourist Attractions

Layer from [admin](#), 5 months ago

Various tourist attractions in Dominica. 1-Waterfalls 2-View Points 3-Scenic Routes 4-Sulfur Springs 5- Historic Buildings

271 views



Average rating (0 votes)

[Download](#)[Create a map](#)

Health Centers

Layer from [admin](#), 5 months ago

Locations of Health Centers, vintage and source unknown.

264 views



Average rating (0 votes)

[Download](#)[Create a map](#)

LATEST MAPS



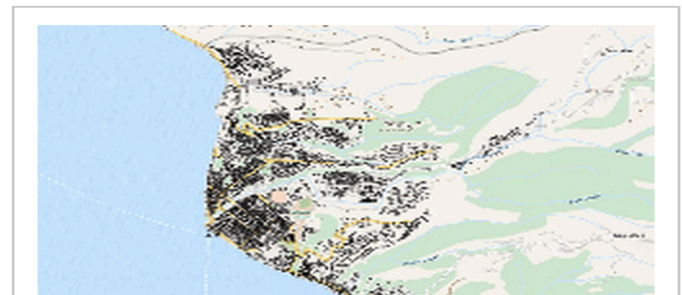
map

Map from [admin](#), 4 months, 2 weeks ago

303 views



Average rating (0 votes)

[Download](#)[View](#)



SEARCH
Enter a location

OVERVIEW
Select layer

WEATHER OUTLOOK
Select layer

DOPPLER
Select layer

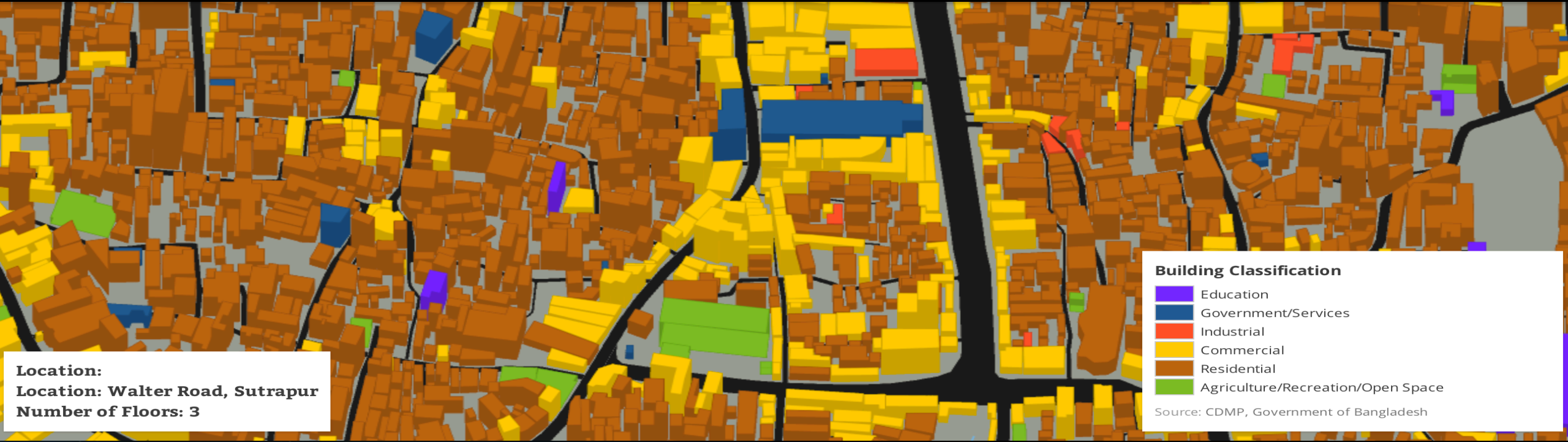
WEATHER STATIONS
Select layer

FLOOD MAP
Select layer



Dr. Mahar Lagmay
Executive Director
Project NOAH
Philippines


The Open Cities Project



Marc Forni

Senior Disaster Risk
Management Specialist

World Bank



Rebecca Moore
Engineering Manager
Google Earth Outreach & Earth
Engine

© 2014 Google
Image © 2014 The GeoInformation Group

Google earth

1945

Imagery Date: 7/18/2013 51°31'28.87" N 0°08'05.07" W elev 117 ft eye alt 979 ft

Dr. Muki Haklay
University College London

CROWDSOURCED
GEOGRAPHIC
INFORMATION USE
IN GOVERNMENT

A report prepared for the World Bank
Global Facility for Disaster Reduction and Recovery



Changing the Culture of Disaster Risk Management

OPEN
by Default

INCLUSIVE By Design

Thanks!

“The Power of the Crowd”

Harnessing Communities

& Opening Data

Tuesday – 11-12:30, Room C

An aerial photograph of a coastal region, likely the Netherlands, showing a complex network of waterways. A prominent red-colored river system flows from the top right towards the center, with several smaller tributaries branching off. The surrounding land is a mix of green and brown, indicating agricultural and urban areas. The sky is a clear, light blue.

2014

UR Understanding Risk forum

Producing actionable information

June 30 - July 4, 2014, London, UK