

Building Resilience in Cities

Kenneth A. MacClune

President and CEO

Institute for Social and Environmental Transition (ISET-
International)

Outline

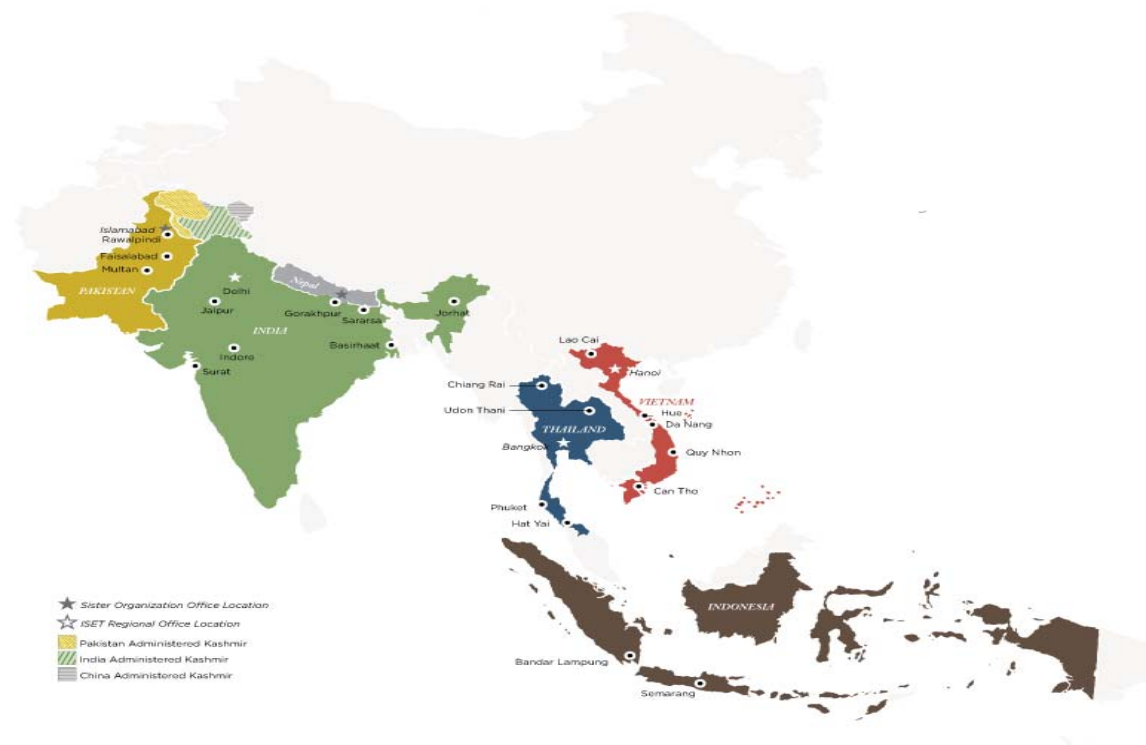
- Who is ISET
 - ▣ What we do and where we work
 - ▣ How we work
- Urban Climate Change Resilience
- Resilience Framework
- Cases
 - ▣ Da Nang Vietnam
 - ▣ Gorakhpur India



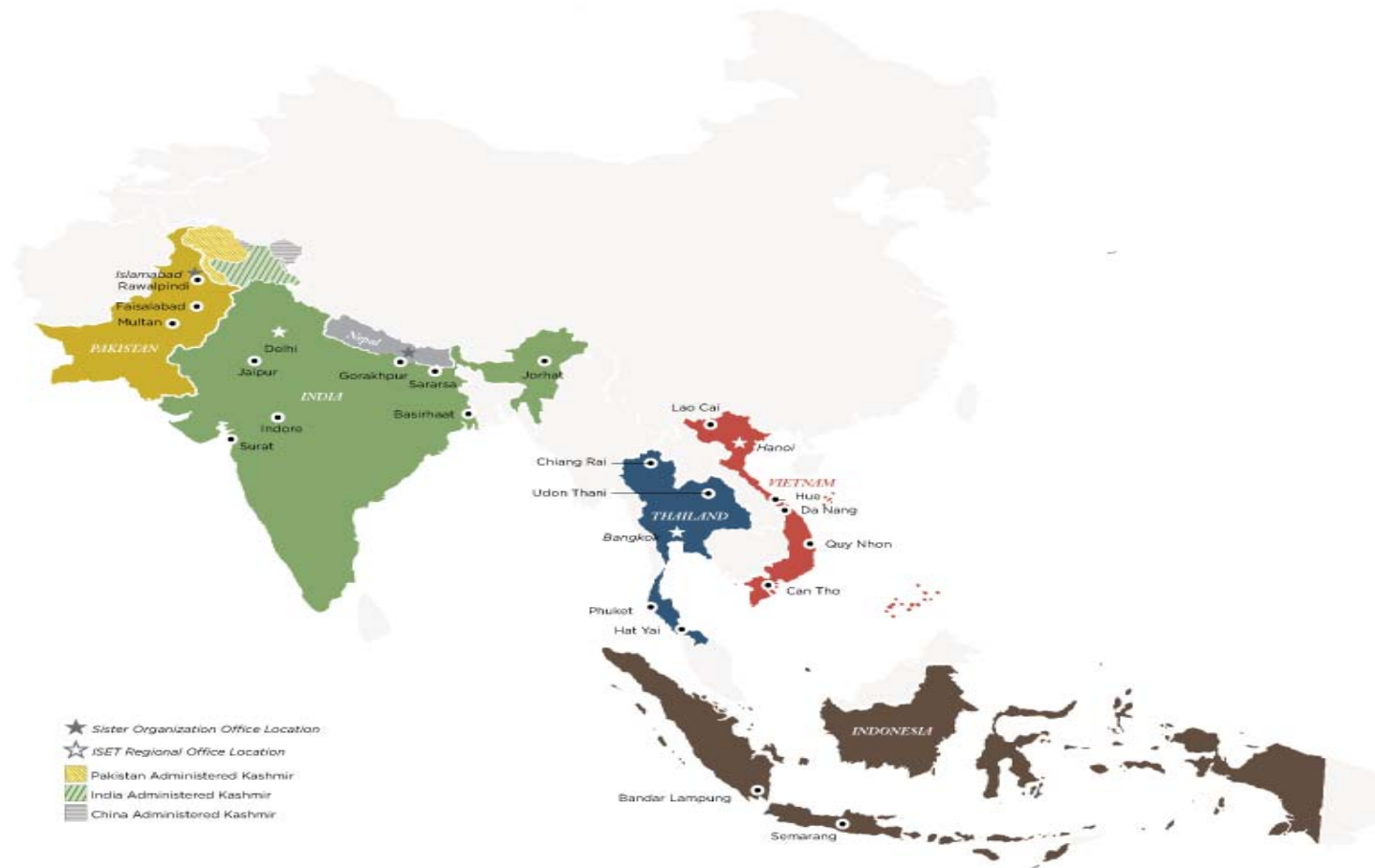
ISET

Institute for Social and
Environmental Transition
International

- International NGO with offices in three countries
 - ▣ HQ in Boulder Colorado
 - ▣ Offices in Delhi and Hanoi
- ISET Network
 - ▣ ISET-Nepal (Kathmandu)
 - ▣ ISET-Pakistan (Islamabad)



Where we work



How we work

- Process based
 - Promotes “Emergence”, e.g. sustainability or resilience
 - Cross-disciplinarity, flexibility
 - Work closely with wide selection of local stakeholders
- Do not enter engagement to “help” or provide one-way “expertise” but to “share and learn”
 - Helps to reframe thinking and protect against “talking over” solutions



Example

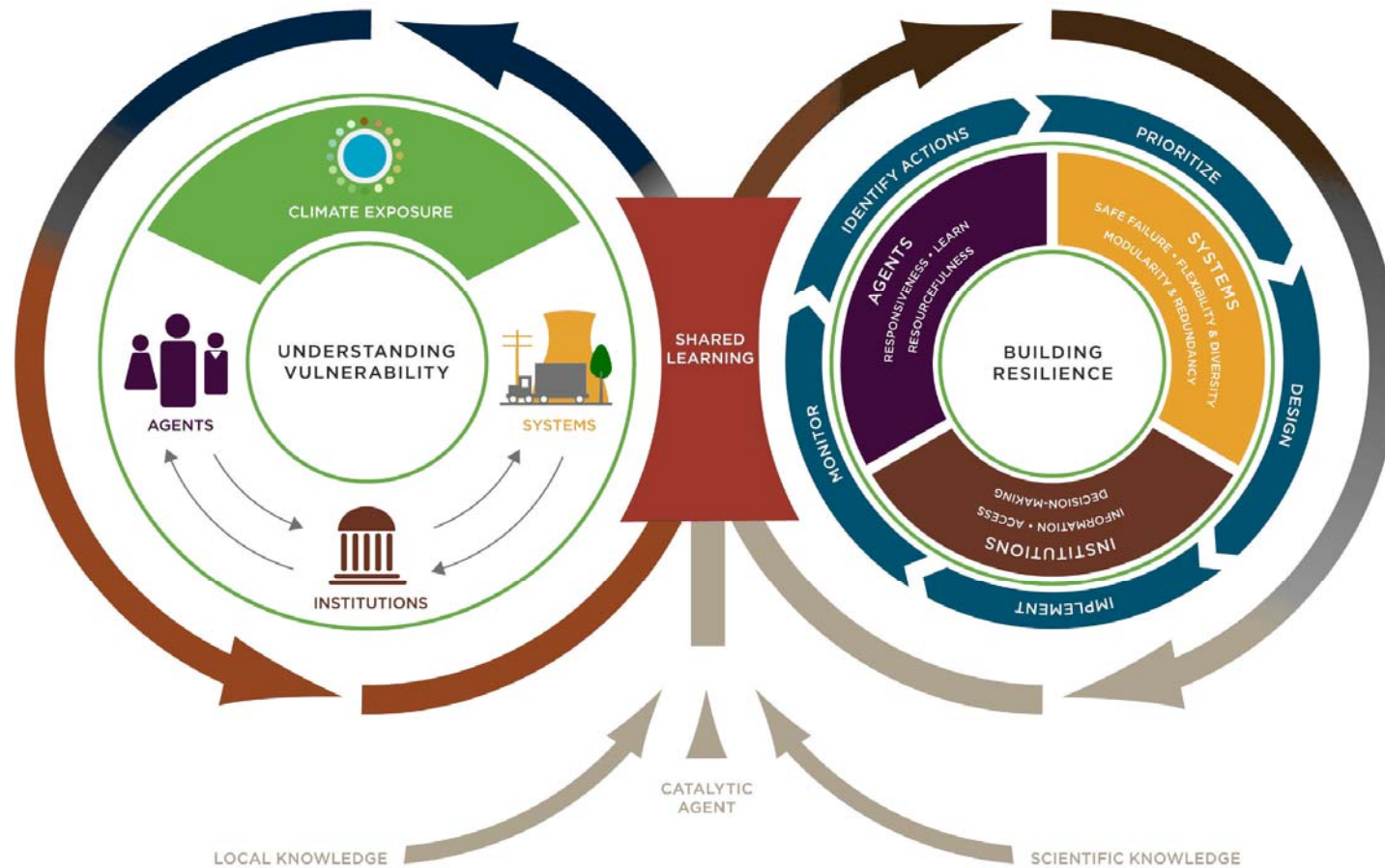
- Asian Cities Climate Change Resilience Network
 - ACCCRN
 - Rockefeller Foundation
- Mekong – Building Climate Resilient Asian Cities
 - M-BRACE
 - USAID-RDMA

ACCCRN & M-BRACE PROGRAMS

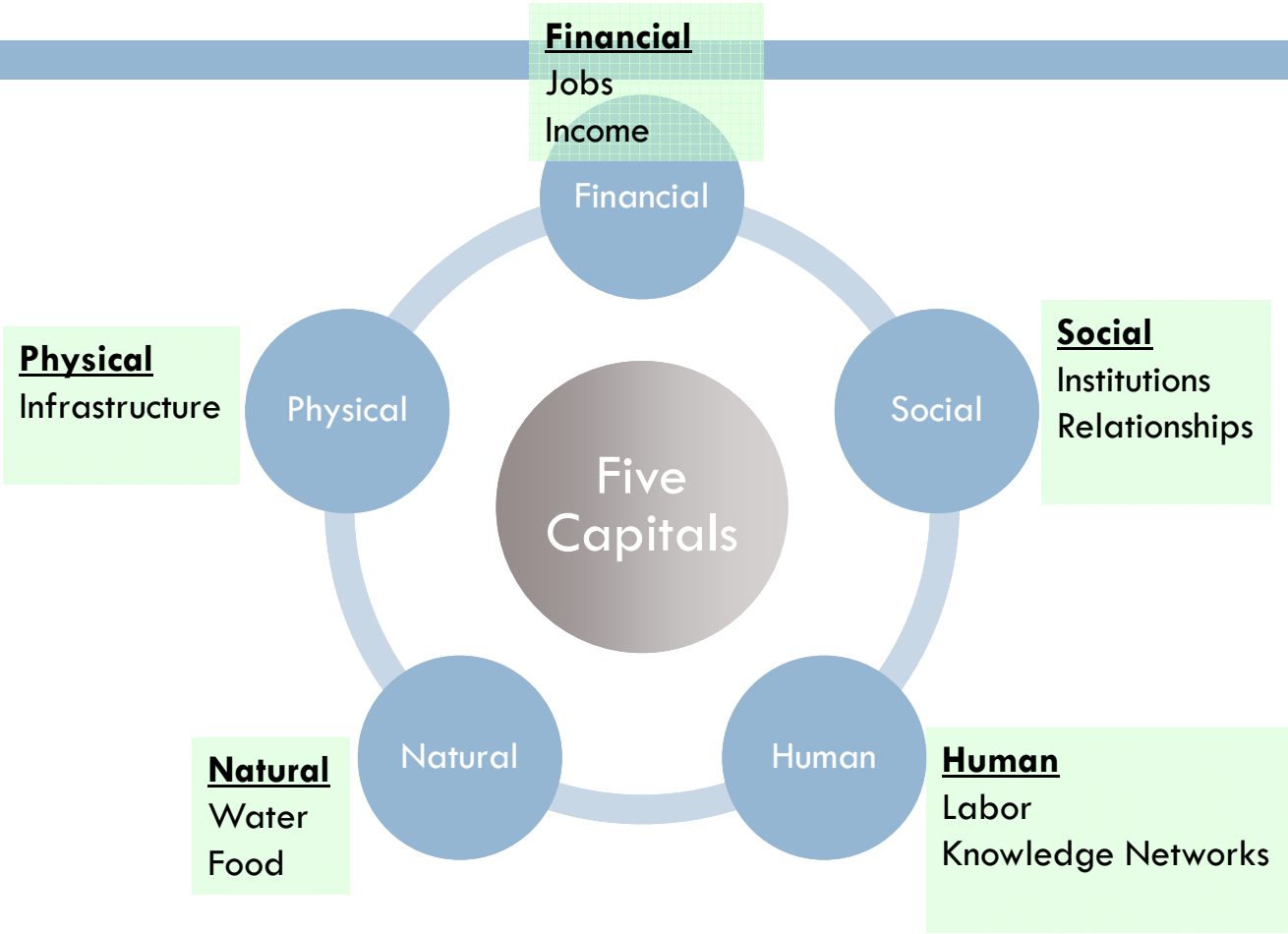




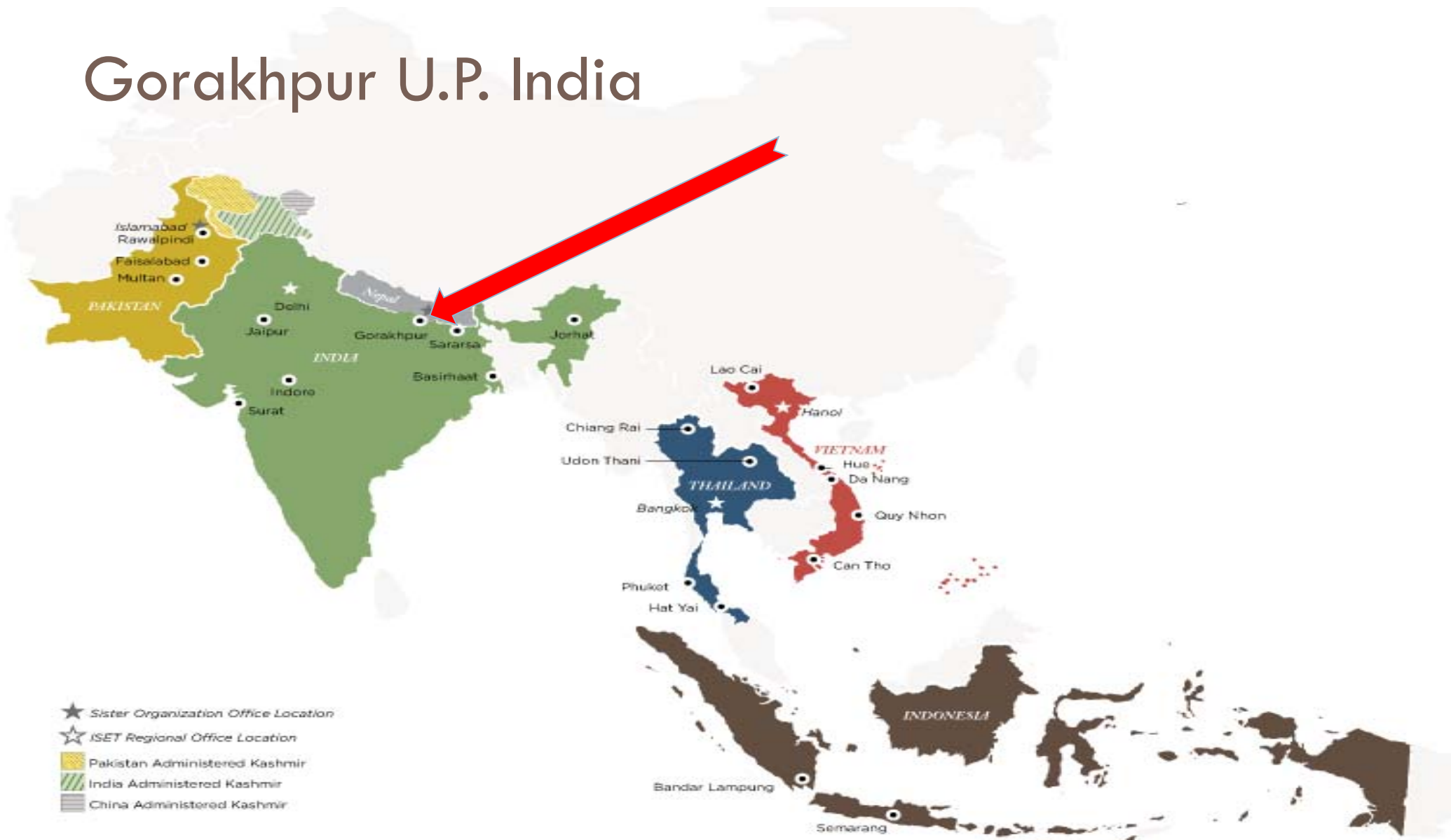
The Climate Resilience Framework



Five Capitals of Resilience



Gorakhpur U.P. India





Gorakhpur UP India

- **Rapid Urbanization**
- **Flooding**
- **Health**

Mahewa Project: main outcomes

- Experimentation and learning-by-doing:
 - ▣ Residents of Mahewa ward have developed their own decentralized waste management and drainage systems.
 - ▣ Interventions have reduced waterlogging and sanitation problems in the absence of effective state support, and have become a sustained practice in the ward.
- Deliberation, public dialogues, advocacy:
 - ▣ A ward-level Citizens Committee successfully lobbied the City Government to provide roads and storm water drainage.

The Climate Resilience Framework in Practice

- Mahewa Ward - Gorakhpur
- Social Capital



Da Nang Vietnam



- ★ Sister Organization Office Location
- ☆ ISET Regional Office Location
- Pakistan Administered Kashmir
- India Administered Kashmir
- China Administered Kashmir

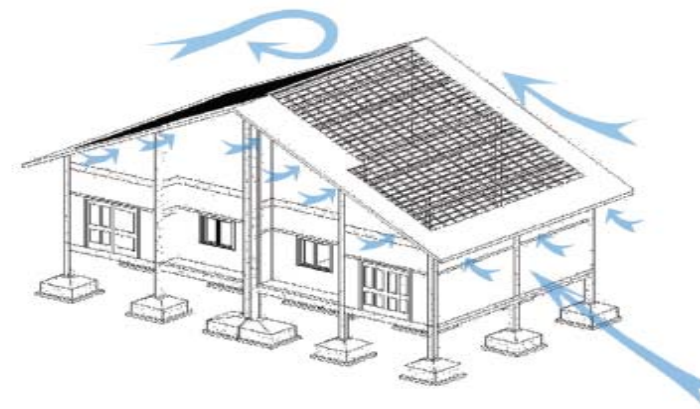
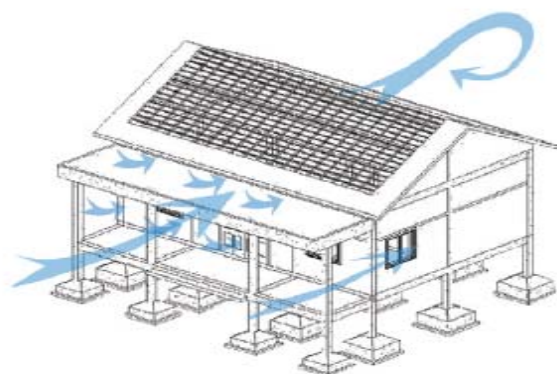
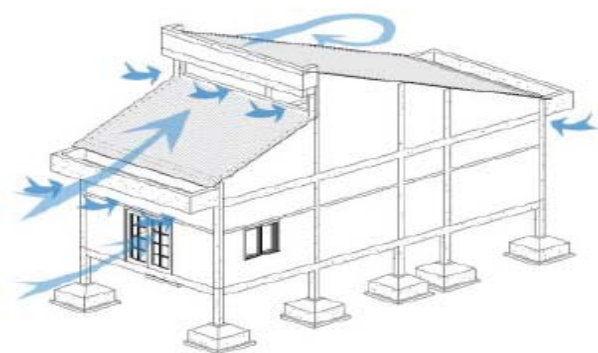
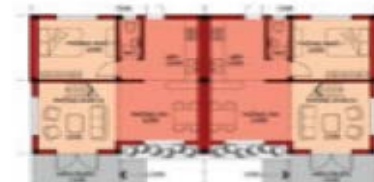
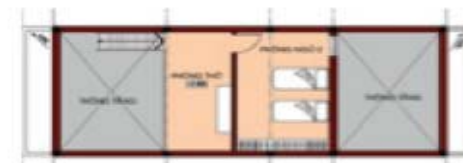
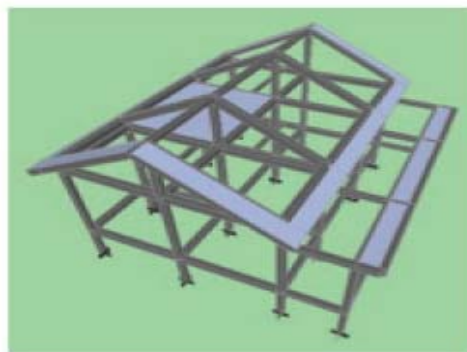
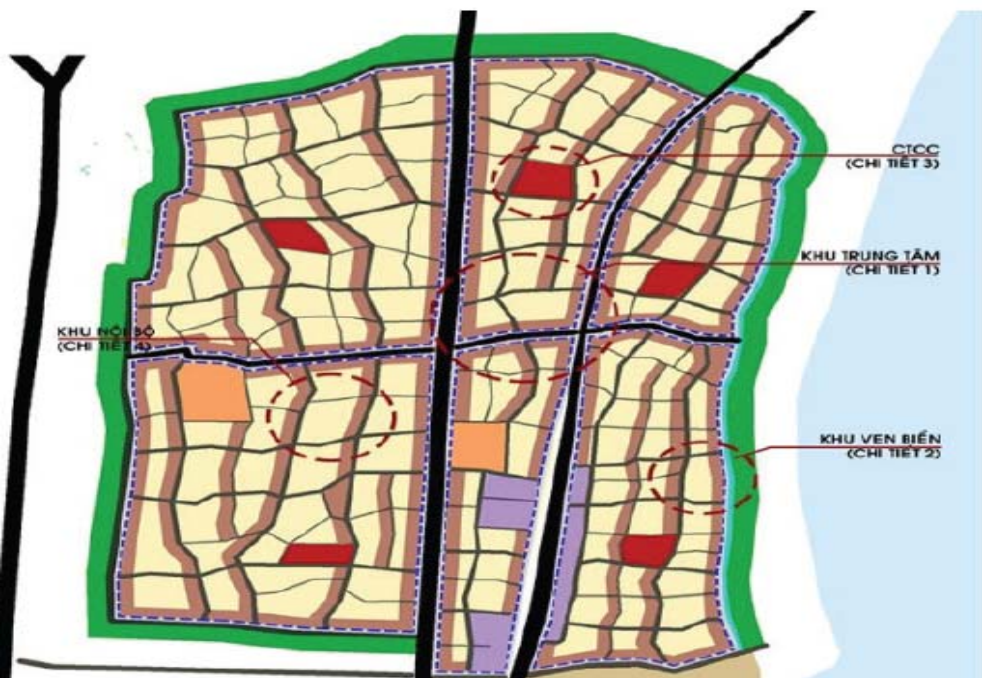
Da Nang, Vietnam

- Rapid Urbanization
- Vulnerable Housing
- Need for Typhoon Safety



Resilient Housing Design Competition







Kenneth MacClune ken@i-s-e-t.org
www.i-s-e-t.org