

# Navigating data scarcity to mainstream accessibility analyses in Africa

Paolo Avner, **Alvina Erman**

**West Africa Understanding Risk** - Abidjan - November 20-22 2019

1



# Objectives

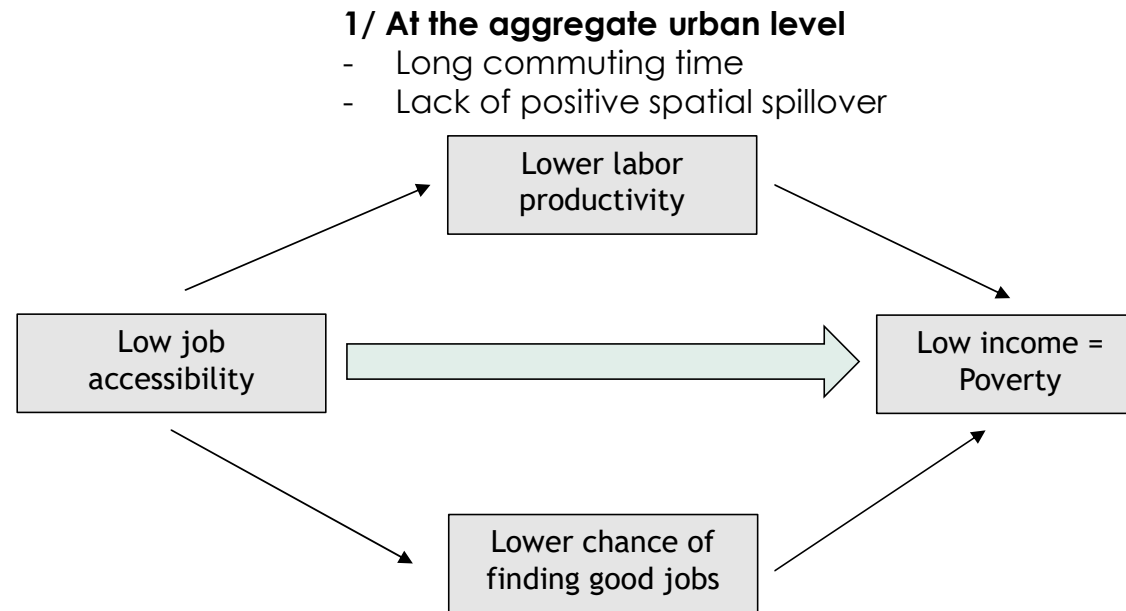
- ▶ Compute accessibility to employment in 11 Africa cities
  - ▶ Bamako, Cape Town, Conakry, Dakar, Dar Es Salaam, Douala, Harare, Kampala, Kigali, Lusaka, Nairobi.
- ▶ Create metrics and visuals to compare accessibility across cities
- ▶ Create a range of datasets that can be re-used
  - ▶ To engage with clients
  - ▶ To investigate the impacts of land use planning/changes and transport investments through counterfactuals
- ▶ Investigate the impacts of disruption from natural hazards



# Why Accessibility matters

- Long distance from jobs
- Transport not reached (network); not reliable (congestion); not affordable.
- Geographic/environmental constraints (hills, slums, etc).

HH/locational factors



## 1/ At the aggregate urban level

- Long commuting time
- Lack of positive spatial spillover

## 2/ At the household level

- High job searching costs
- Become inactive labor force

1/ Prud'homme and Lee (1999), Cervero (2001), Melo et al. (2013), Venables (2017)

2/ Aslund, Osth and Zenou (2010), Jin and Paulsen (2017), Franklin (2015), Chen et al. (2017), Norman et al. (2017),...

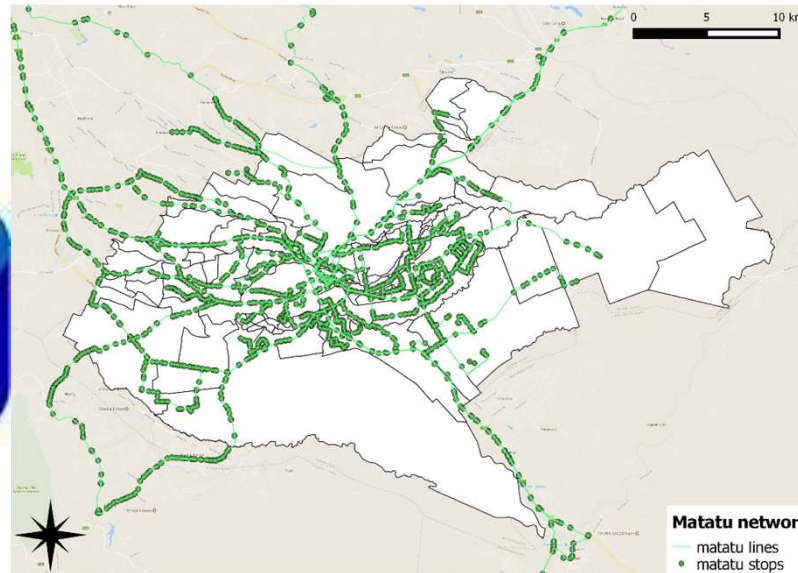
# Accessibility – a simple and powerful metric

4

People



Transport



Jobs



**Accessibility**

# Accessibility – getting around data scarcity

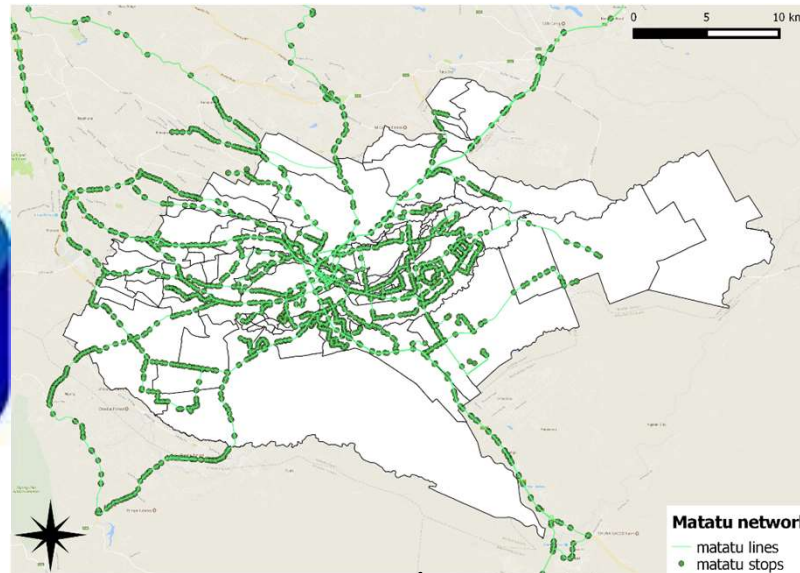
5

People



OK

Transport



Getting there

Jobs

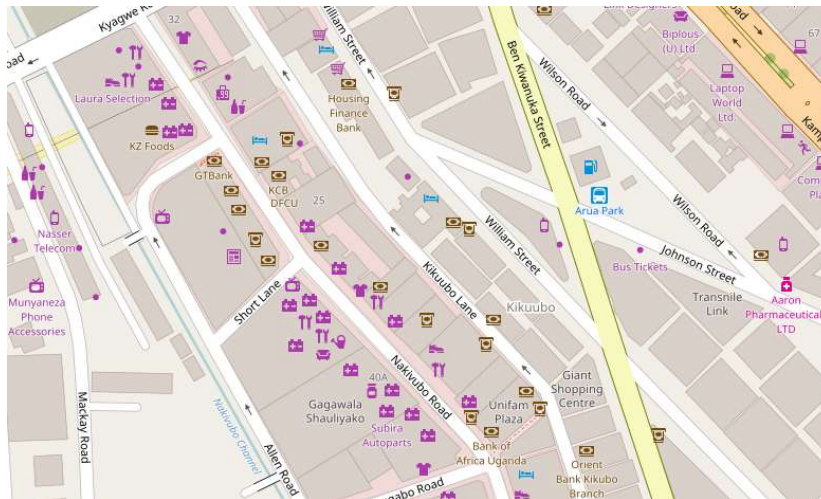


Problem

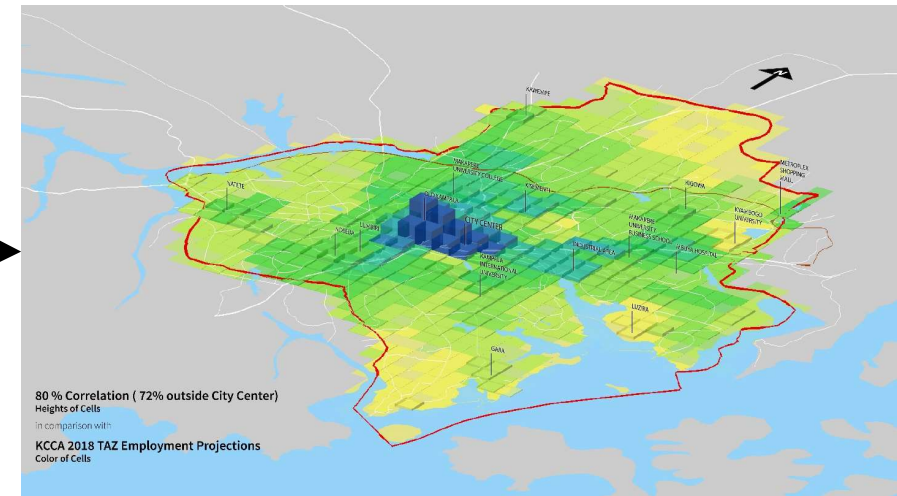
# Building proxies for the distribution of employment opportunities

Using Open Source data to proxy for the location of jobs and inform urban planning and transport policies for accessibility

Extracting amenities, points of interest, road intersections, transportation hubs... from OSM and Google Maps



Using these data to proxy for the location of jobs. An 80% correlation in Greater Kampala with business registries



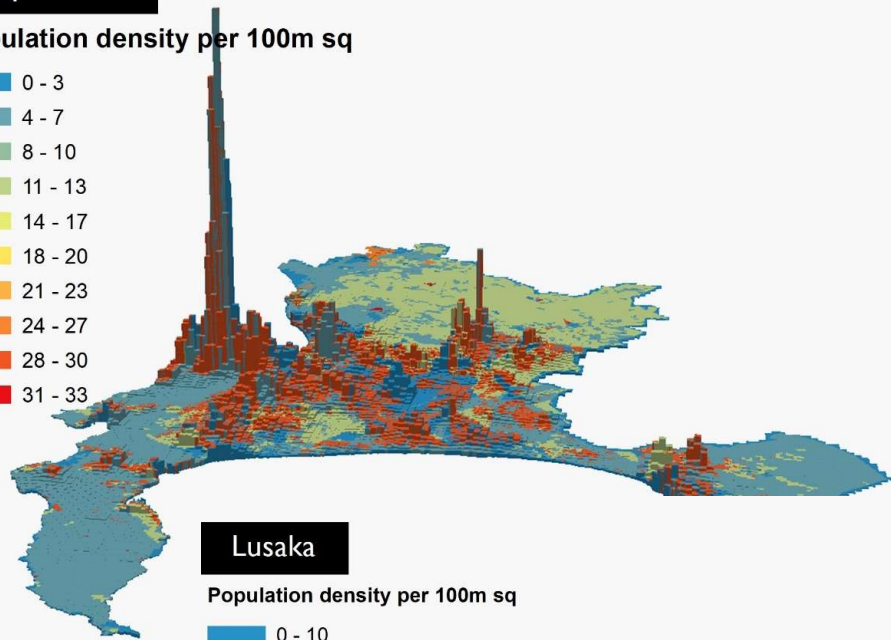
Avner et al., 2019, "Rapid Appraisal Methodology to determine Employment Opportunity Areas in African Cities", World Bank, draft

# Distribution of employment opportunities

7

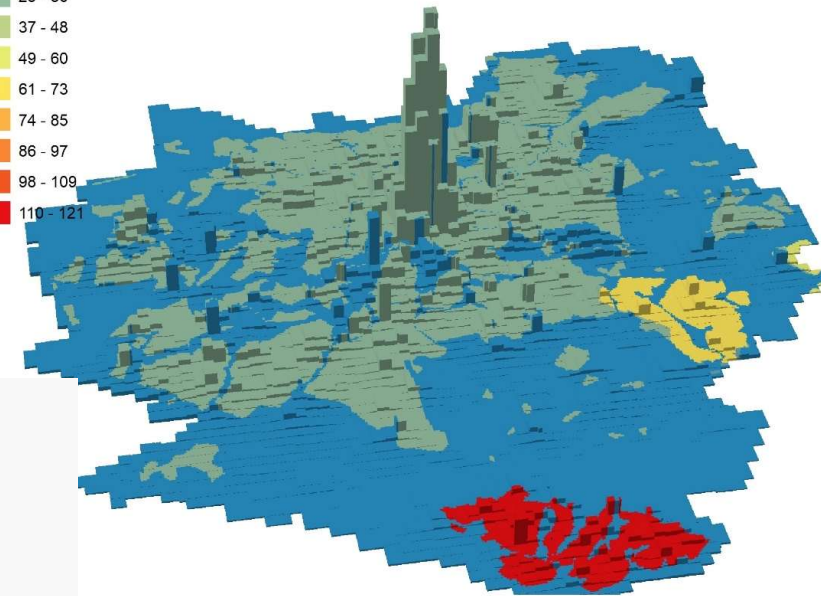
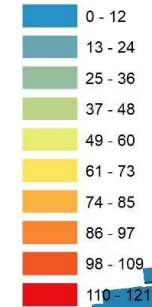
## Cape Town

Population density per 100m sq



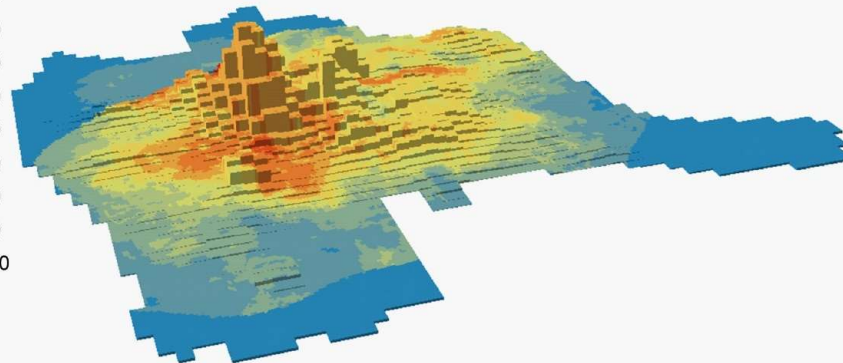
## Harare

Population density per 100m sq



## Lusaka

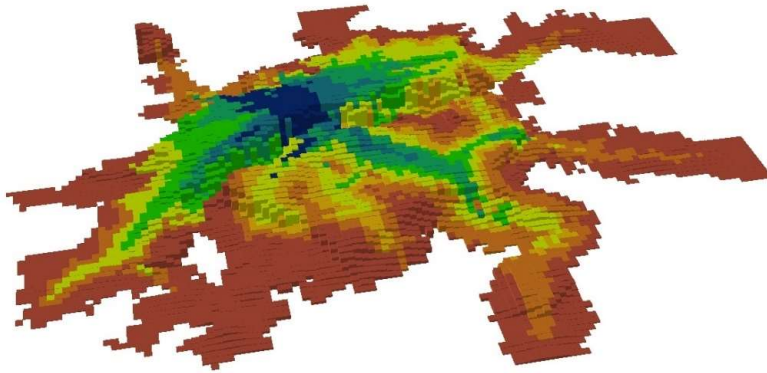
Population density per 100m sq



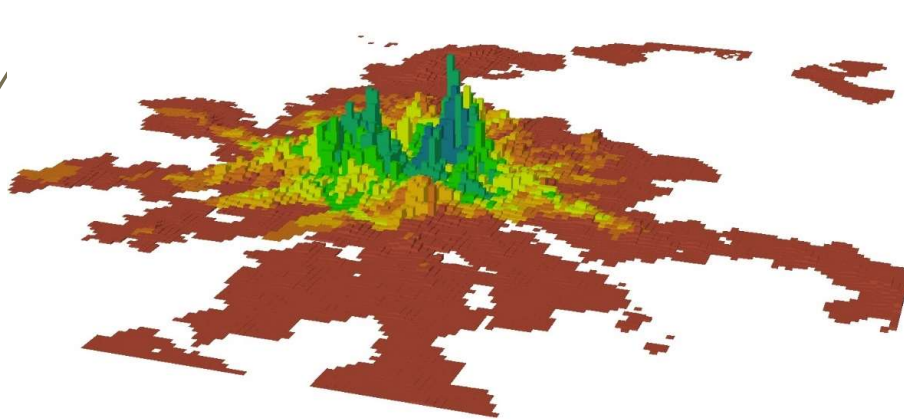
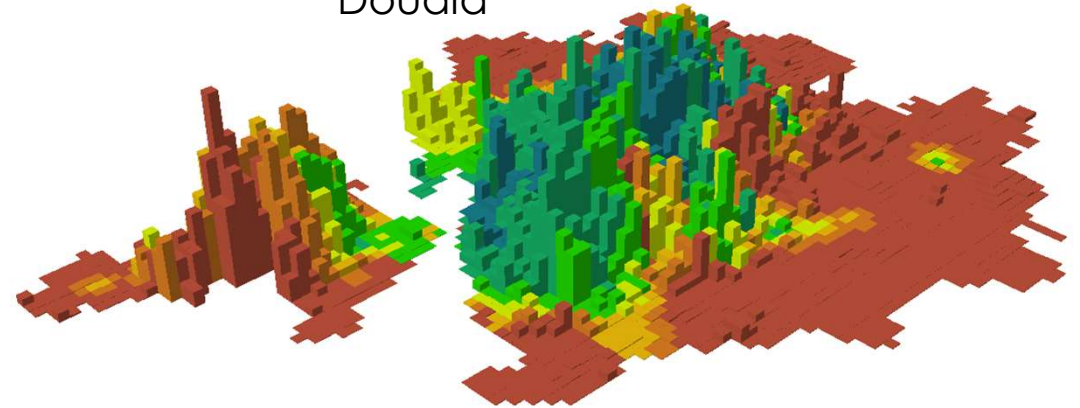
# Distribution of accessibility and population

8

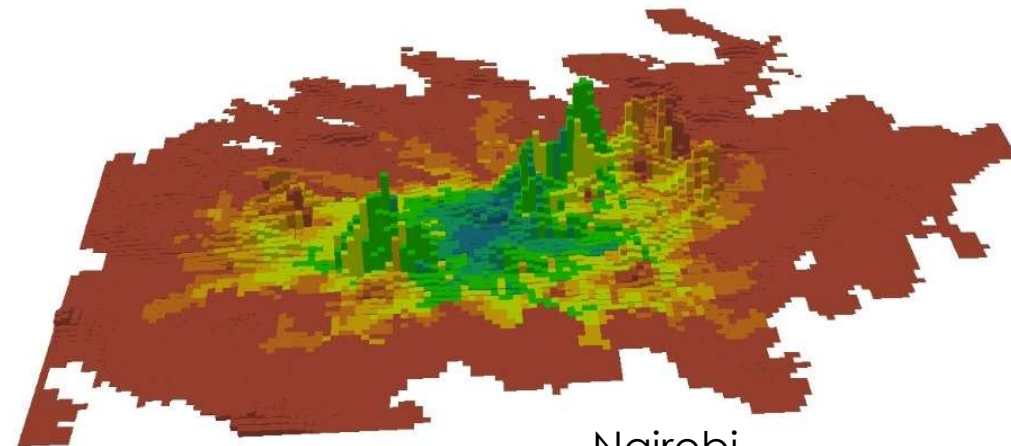
Bamako



Douala



Kampala

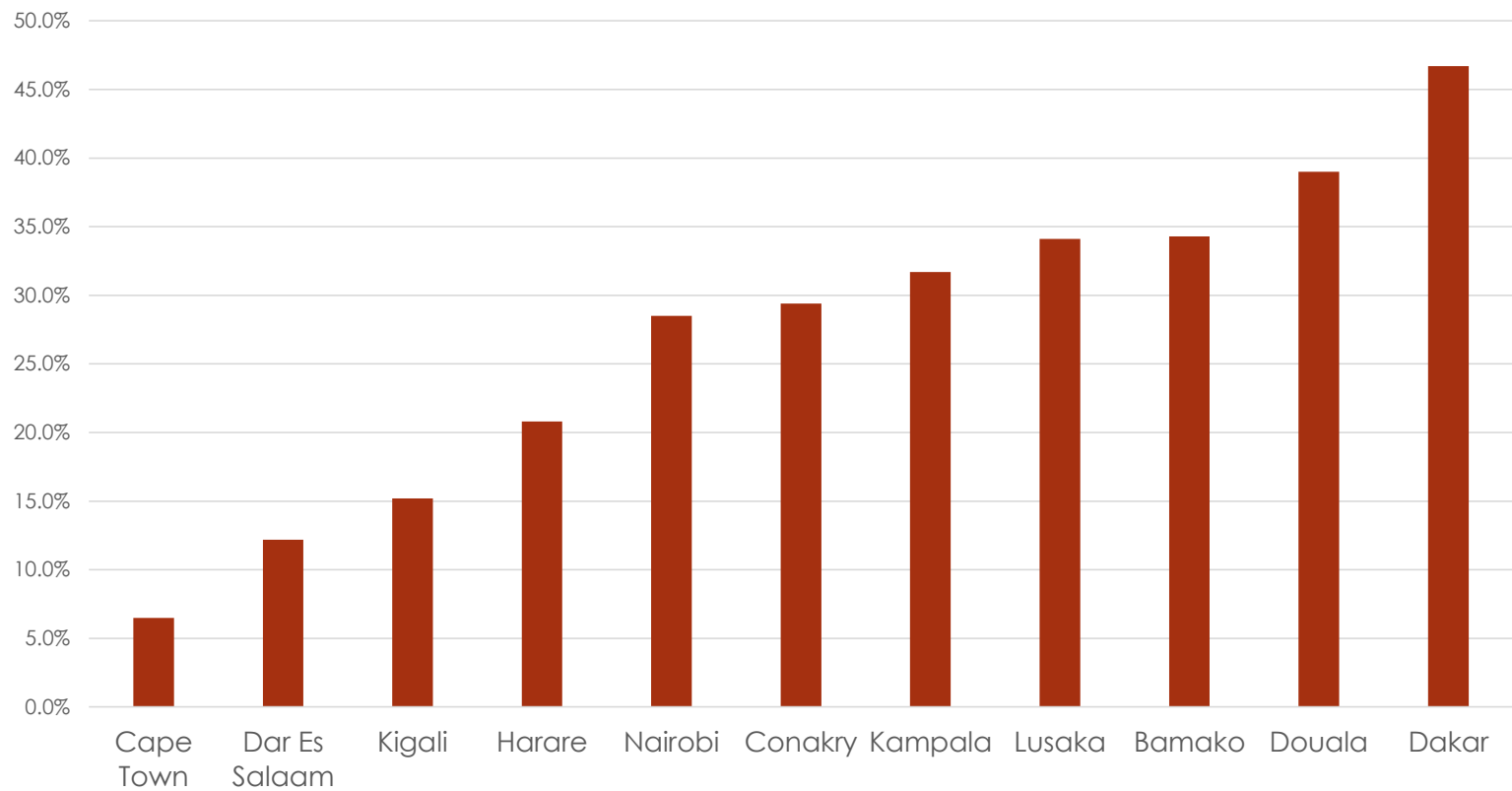


Nairobi

Note: Height is accessibility level and color is population density

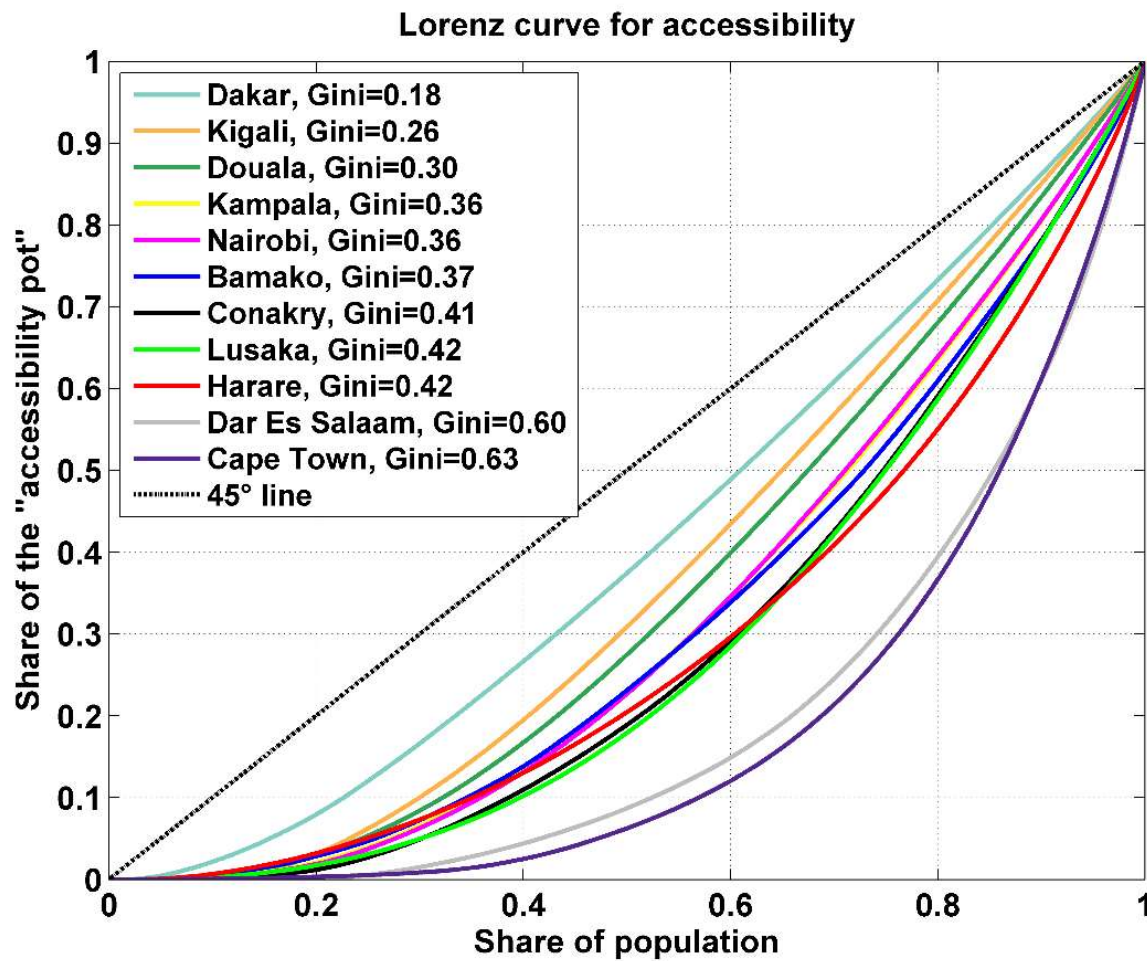


## Average accessibility across cities



# Capturing inequality in access

10



- **Average accessibility** only tells us one side of the story...
- Capturing how **equally/unequally distributed accessibility levels are** in the urban area shows another important dimension
- The use of classic inequality metrics applied to the spatial distribution of accessibility levels: **Lorenz curves and Gini coefficients**

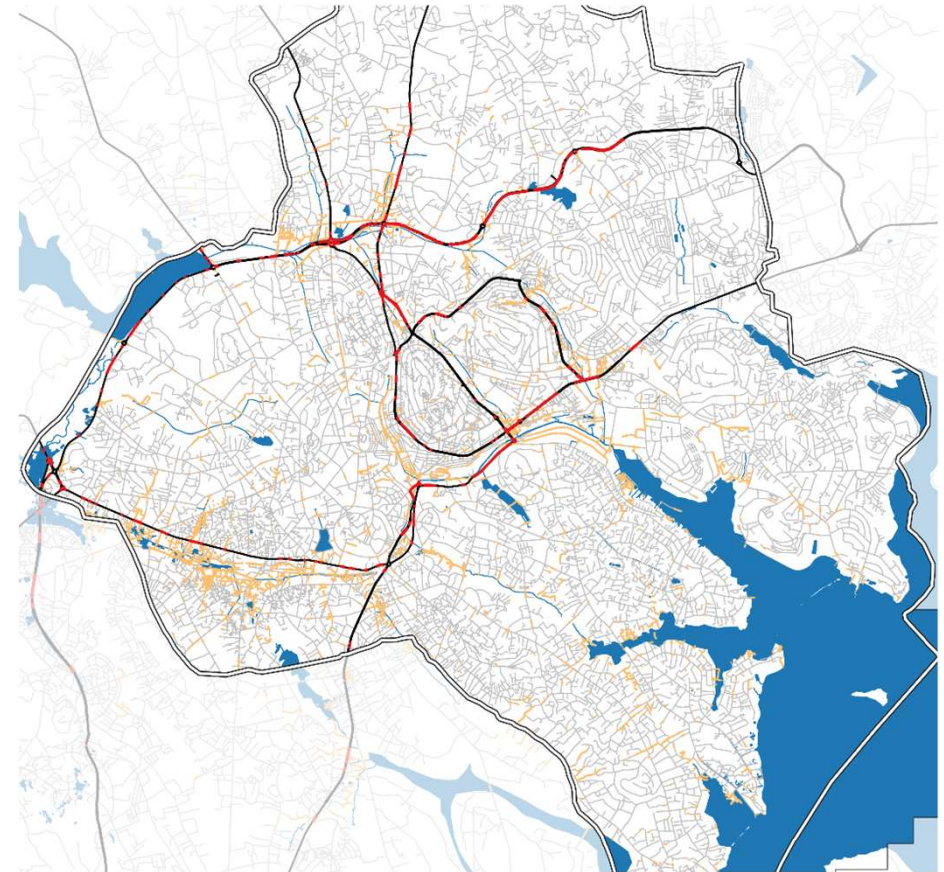
# The impact of floods on accessibility to services

11



Credit: Rachit.14. Licence Creative Commons Attribution-Share Alike 4.0 International

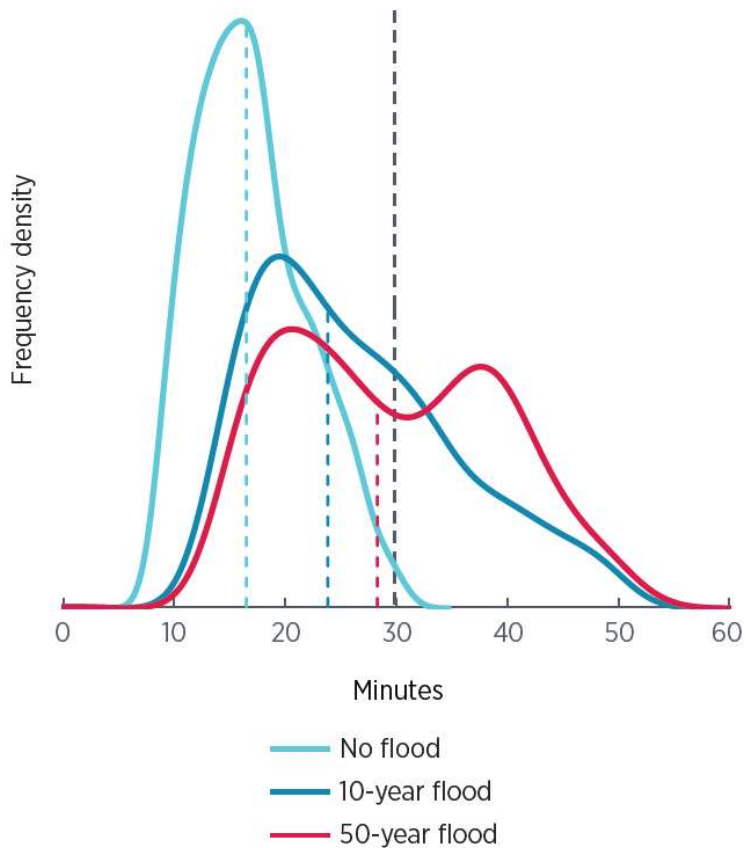
- Road segments affected by a flood with a 50 year return period in Kampala



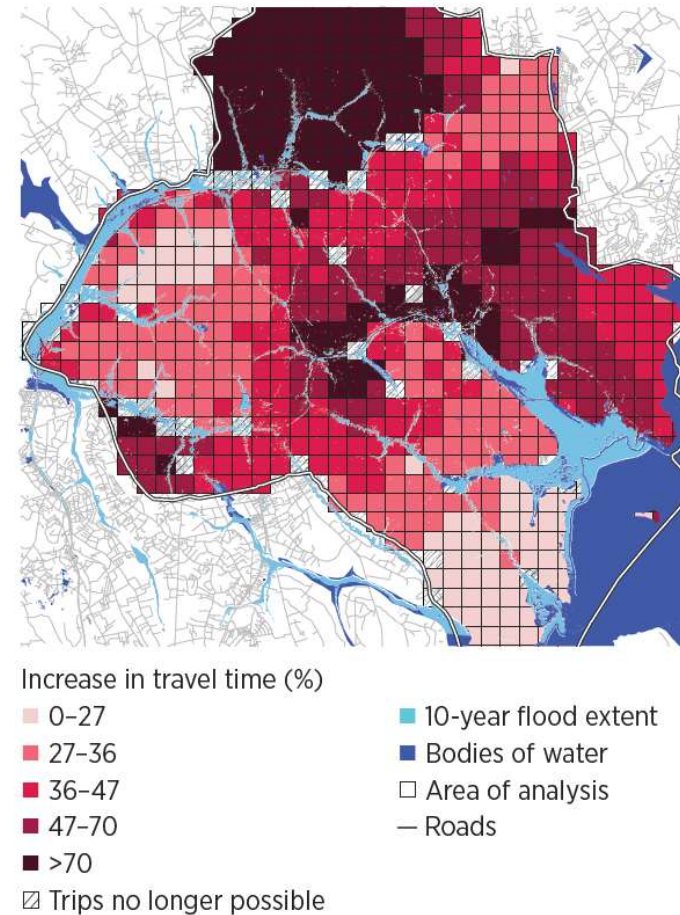
# The impact of floods on accessibility to services

12

a. Mean travel times from locations in all of Inner Kampala to health care facilities



b. Increases in travel times from locations across Inner Kampala to hospitals in a 10-year flood



Hallegatte et al. 2019  
*Lifelines. The Resilient Infrastructure Opportunity*

# Conclusions

- ▶ An initial benchmark for accessibility in Africa cities: Equal, Unequal and In between cities
- ▶ The basis to look at counterfactual scenarios of land use changes and transport investments
- ▶ ... And the basis to look at the impact of disruptions from natural hazards on accessibility to jobs and services. And to prioritize interventions!
- ▶ Freely re-usable sets of data
  - ▶ Employment Opportunity Areas (all 11 cities)
  - ▶ Transport GTFS data for (Douala, Harare, Nairobi, Kigali...)