



Building community resilience, lessons from urban areas globally

Building Resilience Around the World,
UR Boulder

Paty Romero-Lankao
Octubre 24, 2015



URBAN FUTURES

* * * * *

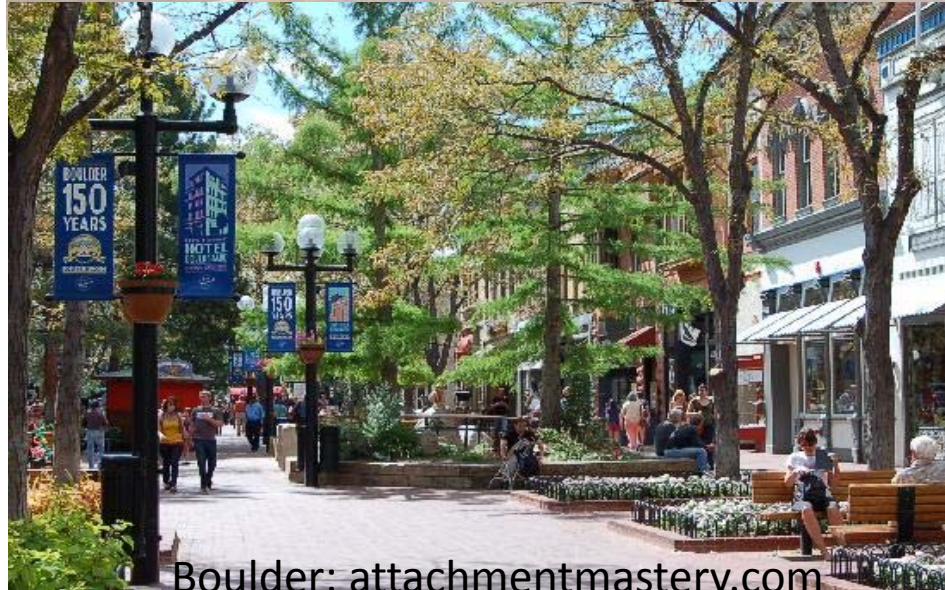
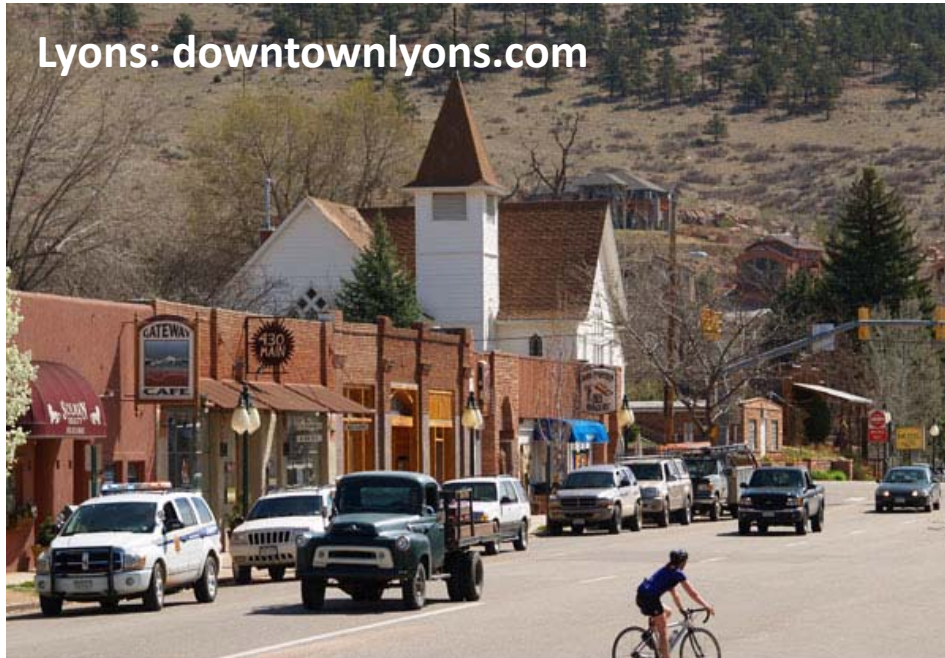
www.ral.ucar.edu/csap/themes/urbanfutures



Outline

- What is community resilience
- Challenged by stresses
- Shaped by 4 resources
- With 3 dynamic attributes

Communities: geographic boundaries & shared fate





Community Resilience is a metaphor



Capacity for successful adaptation
in the face of stresses and
adversities



There are limits to successful adaptation



Waldo Canyon fire
346 homes...



Boulder flooding
September 2013



India flooding
June 2013

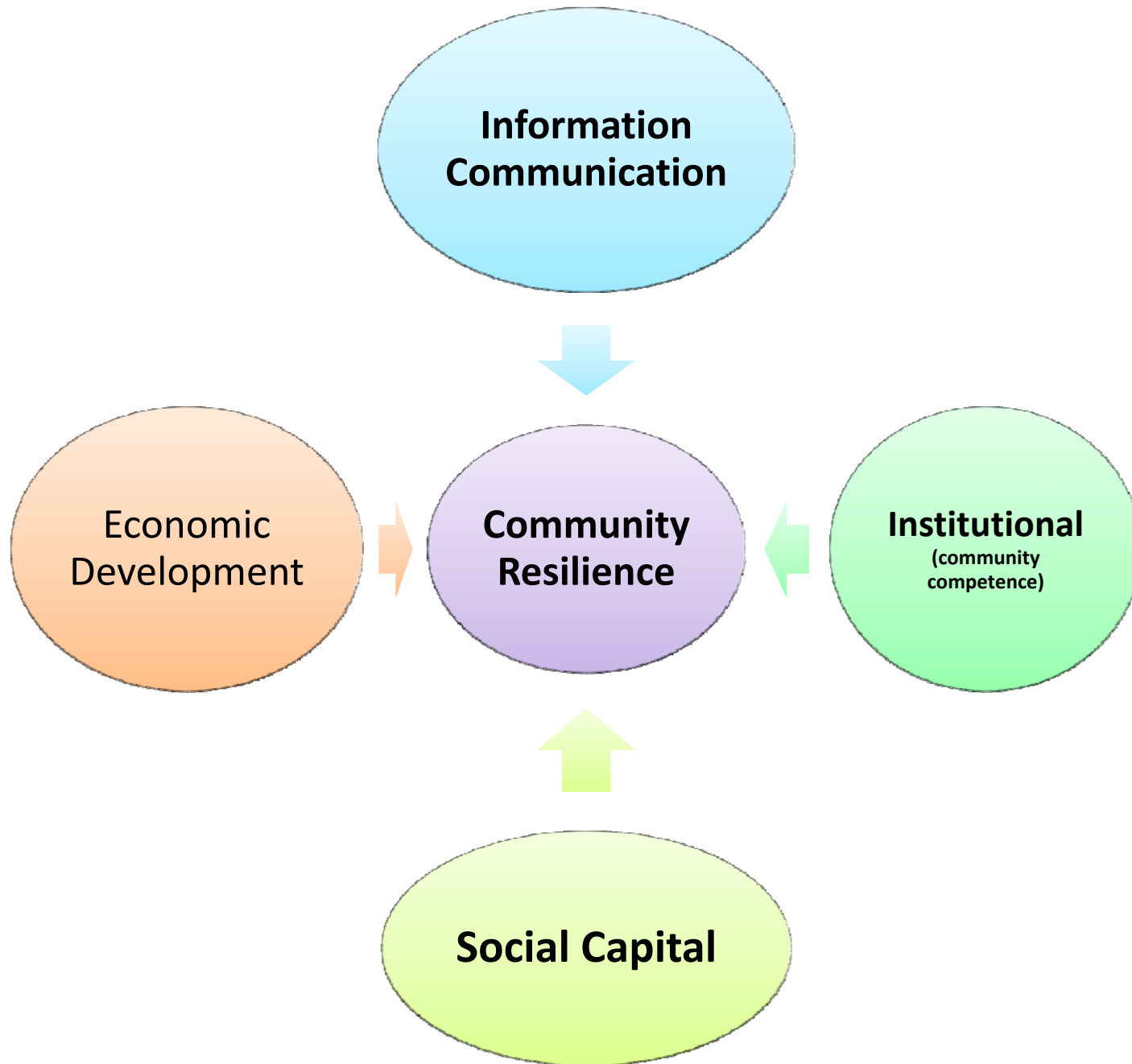
LIMITS WILL BE HIGHER THE
HIGHER THE MAGNITUDE OF

GLOBAL WARMING



Community Resilience is a process linking a network of 4 resources with dynamic attributes





Does Economic Development create:



<http://mellonurbanism.harvard.edu/>

Livelihoods' stability?

Equitable distribution of assets and options?



Own: Dharavi, India

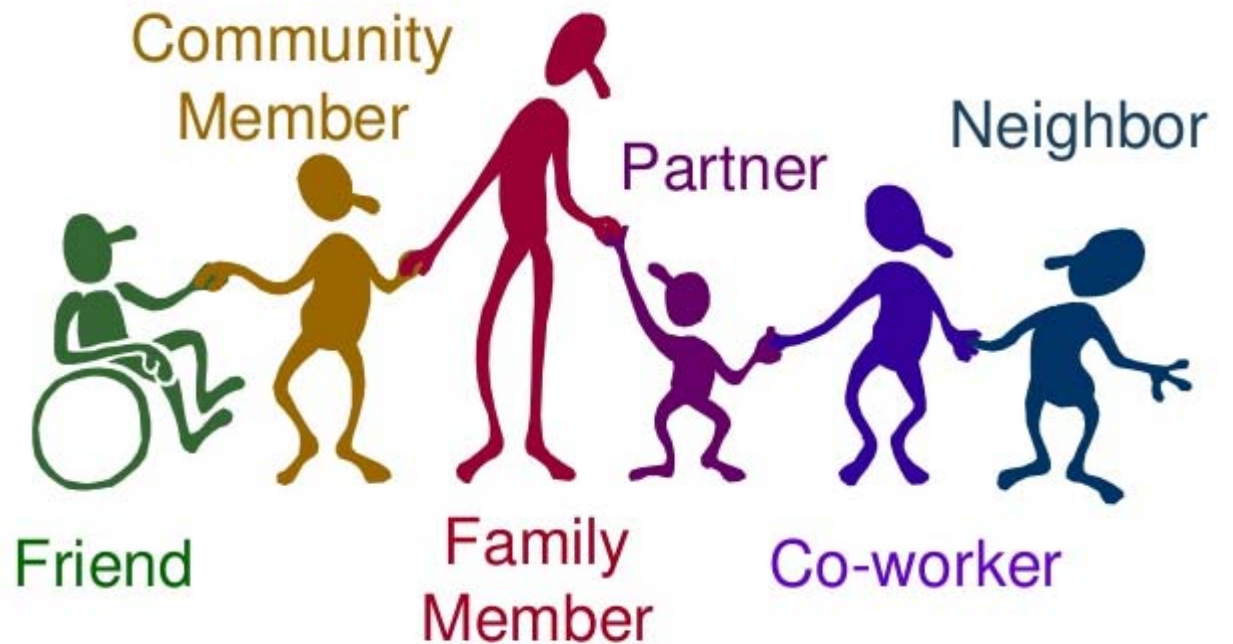
Mobilization of support during and after stresses and adversities:

The rule of relative need, or the rule of relative advantage



Social capital

Individuals invest,
access & use resources
embedded in social
support networks

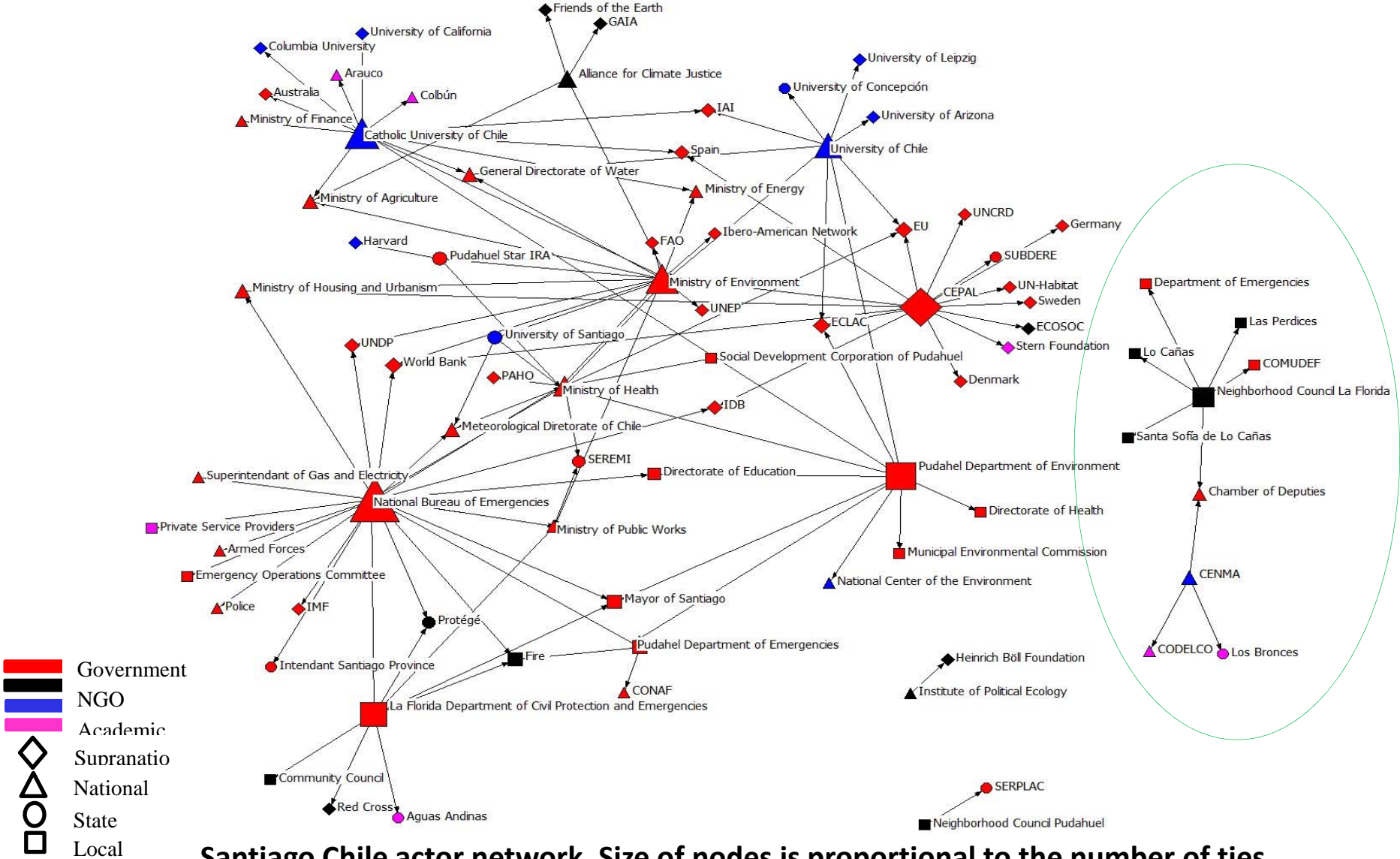


Social capital influences community resilience in positive and negative ways

E.g., low income people in Buenos Aires
Argentina relied on neighborhood network to
transmit telephonically storm-surge warnings



When peripherals are not connected to the network



Santiago Chile actor network. Size of nodes is proportional to the number of ties.

Information effective if “usable”, i.e.,

- Tailored to local conditions
- Trusted
- Timely



Communication and community narratives: do the vulnerable feel heard?

“Neither the municipality, nor the Government... they do absolutely nothing, they don't care. They only care about downtown and about *barrio alto*” (inhabited by high-income populations) (neighborhood leader Santiago de Chile).

How are communities portrayed?

Are they blamed?

Do media narratives lead responders to attend law breakers rather than safe lives?

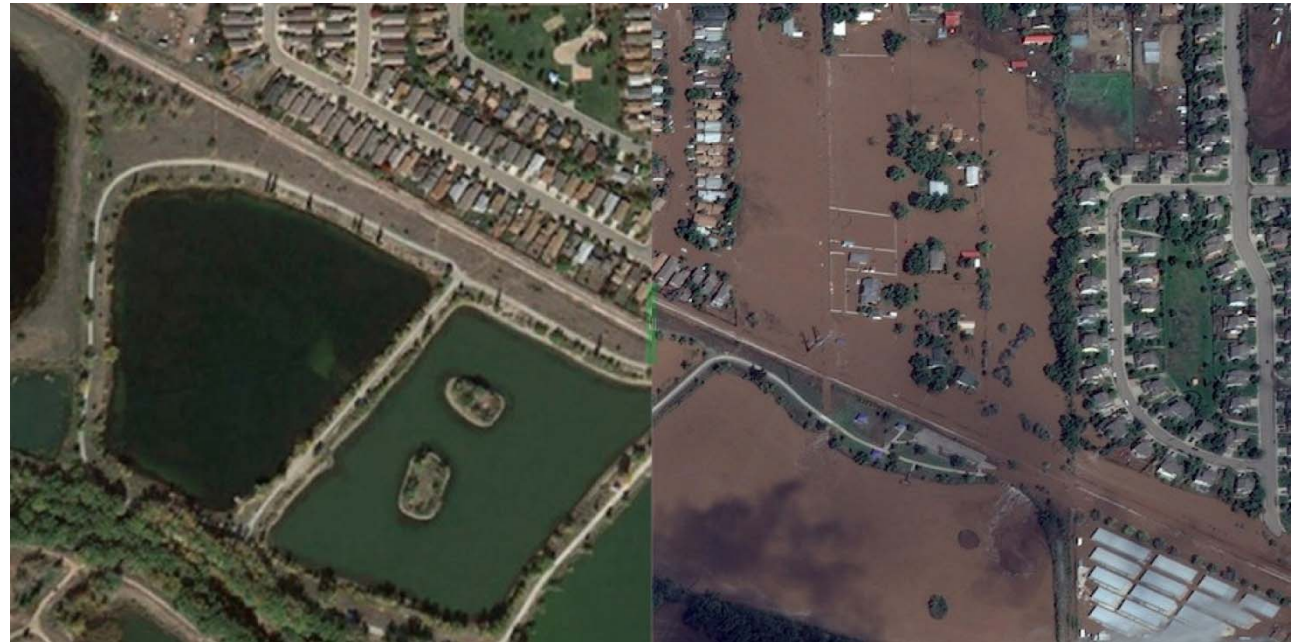


Shall we focus on the dynamic attributes of community resilience?

Robustness

Redundancy

Rapidity



Or shall we also focus on possible outcomes of our community responses?

First,
unintentional
transformation
Business as
usual



Second, persistence

- Rebuild
- Restore



Third, proactive navigation of transformation

