



Federation of Urban and Rural Poor

(Fedurp)

"Our Unity, Our Strength"

Centre of Dialogue on Human
Settlement and Poverty Alleviation
(CODOHSAPA)

&

Federation of Urban and Rural Poor (FEDURP)



From Risk to Resilience: Enhancing Resilient Neighbourhoods through Social Mobilisation and GIS Techniques - A case of CODOHSAPA/FEDURP in Freetown, Sierra Leone

Richard Bockarie

Learning, Monitoring and Evaluation Officer

21st Nov. 2019

ABOUT US

Centre of Dialogue on Human Settlement and Poverty Alleviation (CODOHSAPA) is a non-profit and non-governmental organization established in 2011, working to mobilise and provide both technical and financial support to its community counterpart, Federation of Urban and Rural Poor (FEDURP). FEDURP comprises vulnerable women, men, youth and children who are mobilized around dynamic saving schemes, networked at settlement, city and national levels to drive a collective, bottom-up initiatives influencing change towards inclusive and resilient cities and localities, and contribute to national development agenda.



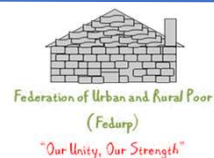
PROGRAMME THRUST

1. Livelihood
2. Community planning and upgrading and social service delivery
3. Urban Health
4. Partnership building/networking
5. Advocacy



OUR APPROACH

From Risk to Resilience: Enhancing Resilient Neighbourhoods
through Social Mobilisation and GIS Techniques



SOCIAL MOBILISATION

Social Mobilisation

Group Mobilization/ Savings

Provides capacity to bounce back
in time of disaster

Mobilization and
establishment of CDMC

CDMCs take action to prevent
disasters or serve as first
responders when disaster occurs



GIS TECHNIQUES

We collect

Settlement level data

Household level data

Informs the action of the CDMCs and also used for advocacy purposes

It informs disaster response

Develop Resilient Action Plans

Evacuation Centres

Signage

Hazard Points

Flash flood point

Total number of residents

Livelihood

Health

Access to services



Outcome (Examples)

ACCESS TO SERVICES BASED ON ROAD NETWORKS

Million Neighborhoods

[Interactive explainer](#) [Play video](#)

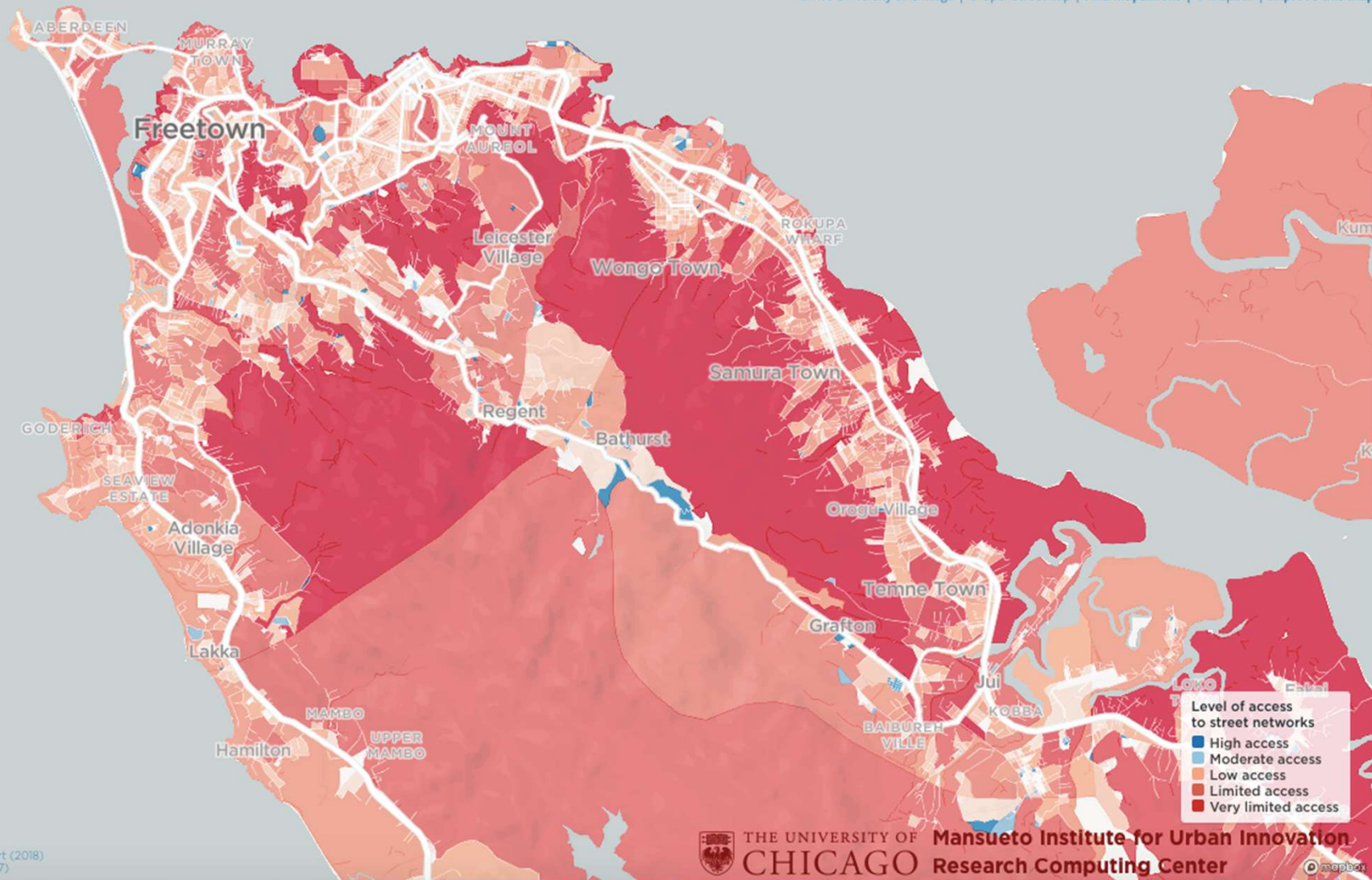
What the map shows

In fast-growing cities, some neighborhoods can become so densely packed that the movement of people and the construction of vital infrastructure becomes very difficult.

This map highlights neighborhoods with limited access to streets. Red areas show buildings that are very hard to access directly from the street, while blue areas display buildings with better street access.

Explore a city

- Freetown, Sierra Leone
- Monrovia, Liberia
- Nairobi, Kenya
- Dar-es-Salaam, Tanzania
- Beira, Mozambique
- Douala, Cameroon
- Kinshasa, DR Congo
- Blantyre, Malawi
- Port-au-Prince, Haiti
- Petare, Venezuela
- Kathmandu, Nepal



Methods:
Brelstord, Martin, Hand, and Bettencourt (2018)
Brelstord, Martin, and Bettencourt (2017)

Construction of feeder road at Kamayama community by CDMCs



Hazard Mapping and Resilient Action Plan



Construction of Drainage by Residents in Dworzack Community



Tree Planting Initiative by Community Residents



LET THEM LEAD! RESILIENT IS BUILT WHEN ALL ARE
INVOLVED

“Community led data collection an alternative systems of knowledge that are owned by the communities and have become the basis of a unique social and political argument that supports an informed and united voice of the urban poor in building resilience.”



Thank You!!!



Federation of Urban and Rural Poor
(Fedurp)

"Our Unity, Our Strength"

www.codohsapa.org

Email: info@codohsapa.org

Twitter: [@codohsapa/sl](https://twitter.com/codohsapa/sl)

Facebook: [@codohsapa/sl](https://www.facebook.com/codohsapa/sl)

Youtube: [kyctv/sl](https://www.youtube.com/kyctv/sl)

Website: www.codohsapa.org

www.sdinet.org

www.knowyourcity.org